



Maryland Avenue,
Birmingham, B34 6EB
£255,000



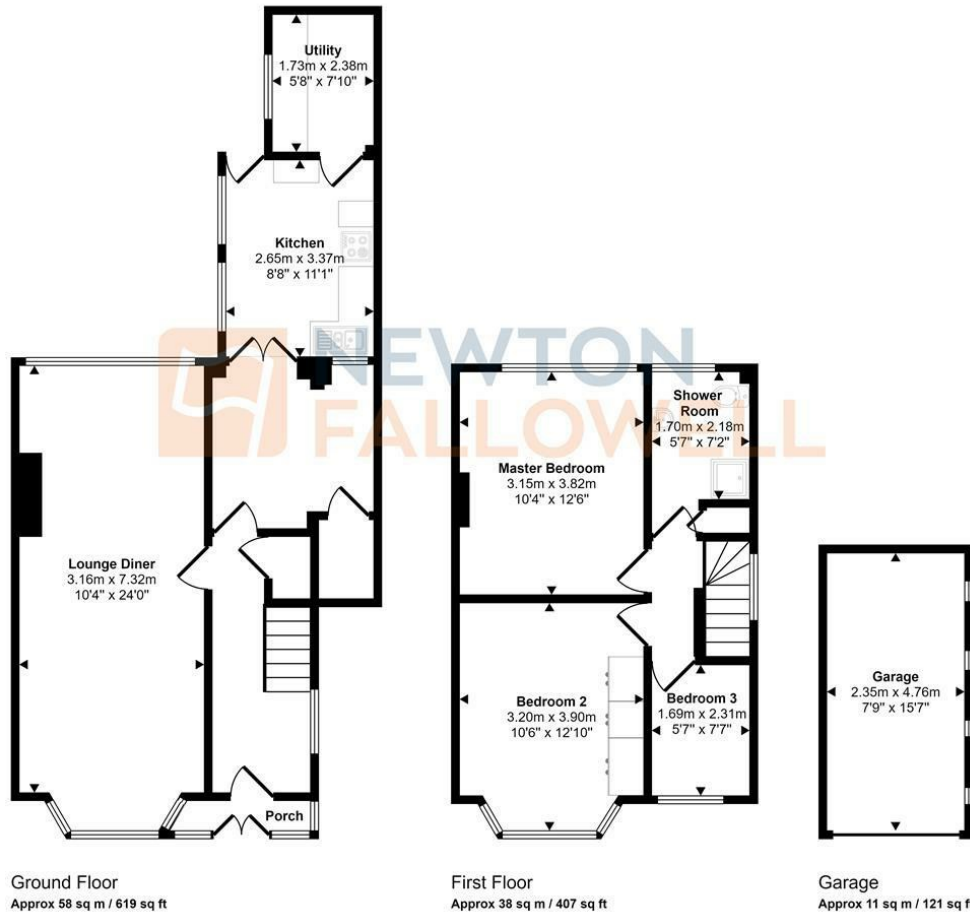
NEWTON FALLOWELL are pleased to market this semi-detached family home within in Hodge Hill, Birmingham. The property has been beautifully decorated throughout and comprises of a lounge/dining room, kitchen, utility, three bedrooms and family bathroom. It also benefits from gas central heating and double glazing through out, along with a rear garden and garage.

Check out the 360 your online!

Disclaimer - These particulars are issued in good faith but do not constitute representations of fact or form part of any offer or contract. The matters referred to in these particulars should be independently verified by prospective buyers or tenants. Newton Fallowell nor any of its employees or agents has any authority to make or give any representation or warranty whatever in relation to this property.

Draft Details - PLEASE NOTE THESE ARE DRAFT DETAILS AWAITING THE VENDORS APPROVAL AND CANNOT BE RELIED ON TO BE WHOLLY ACCURATE.

Approx Gross Internal Area
107 sq m / 1147 sq ft



This floorplan is only for illustrative purposes and is not to scale. Measurements of rooms, doors, windows, and any items are approximate and no responsibility is taken for any error, omission or mis-statement. Icons of items such as bathroom suites are representations only and may not look like the real items. Made with Made Snappy 360.

Energy Efficiency Rating		
	Current	Potential
Very energy efficient - lower running costs		
(92 plus) A		
(81-91) B		
(69-80) C		
(55-68) D		
(39-54) E		
(21-38) F		
(1-20) G		
Not energy efficient - higher running costs		
England & Wales	EU Directive 2002/91/EC	

Environmental Impact (CO ₂) Rating		
	Current	Potential
Very environmentally friendly - lower CO ₂ emissions		
(92 plus) A		
(81-91) B		
(69-80) C		
(55-68) D		
(39-54) E		
(21-38) F		
(1-20) G		
Not environmentally friendly - higher CO ₂ emissions		
England & Wales	EU Directive 2002/91/EC	



t: 01212709744 e: erdington@goodchilds-uk.com

www.goodchilds-uk.com